


# Home For Sale by Owner

2110 Mississippi Blvd, Bettendorf, IA 52722



## \$165,000

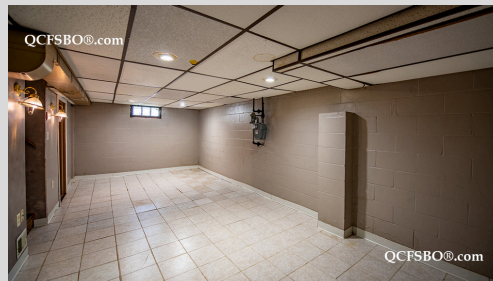
 CC Iowa Properties LLC

 319-535-2208



Scan this QR code for more information and additional photos

Listing ID: FUE21NX



## Property Highlights

- Lot Size .21 Acre
- Built in 1954
- 1 Story
- 882 sqft Main
- 1,382 sqft Total
- 3 Bedrooms
- 1.5 Bathrooms
- Part fin basement
- Lower Level Laundry
- Eat-in Kitchen
- Tiled Backsplash
- Breakfast Bar
- Appliances Included
- Central HVAC
- Shed
- Off Street Parking

  
QCFSBO.com

Flyer & Listing by QCFSBO

3522 Jersey Ridge Road

Davenport, IA 52807

563-355-1310

info@qcfsbo.com

www.qcfsbo.com

Welcome to this charming 3 bedroom, 1.5 bath home located in desirable Bettendorf School District. On a secluded street, steps away from Bettendorf Community Center and Sunny Crest Park playground! The main level includes 880 sqft, 3 bedrooms, 1 full bath. The partially finished basement offers 500 sq ft for extra living space, a half bath and a bonus room. Property includes all appliances shown. Kitchen and Bath were both remodeled in 2021. County permits show siding permit pulled in June 2020 and roof permit in April 2014. Outside you'll enjoy a large 12x14 deck, 8x12 storage shed and a deep .21 acre lot.